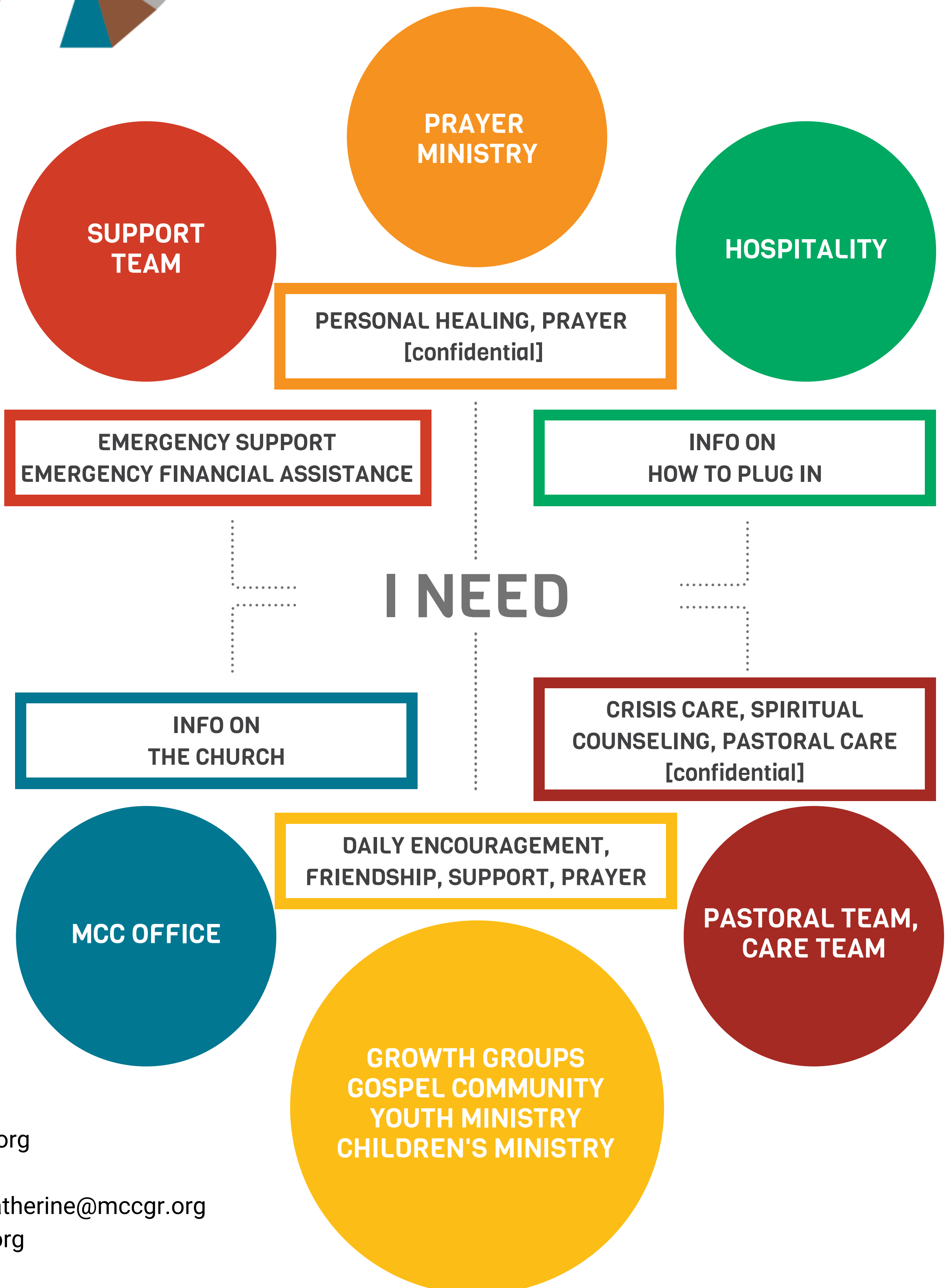




# Community of Care

At MCC we deeply desire that people find authentic, soul nourishing relationships. We are also committed to helping people find the support and care they need in times of crisis and loss. Our goal is to be a community that reflects the love of Jesus Christ. Here is an overview of our community of care.



## PRAYER MINISTRY

Cate Jansma • [cate@mccgr.org](mailto:cate@mccgr.org)

## SUPPORT TEAM

[support@mccgr.org](mailto:support@mccgr.org)

## HOSPITALITY

Ellery Boer • [hospitality@mccgr.org](mailto:hospitality@mccgr.org)

## PASTORAL CARE

Pastor Katherine Hirschberg • [katherine@mccgr.org](mailto:katherine@mccgr.org)

Pastor Jim Boer • [jimb@mccgr.org](mailto:jimb@mccgr.org)

## MCC OFFICE

Dave Hartwell • [info@mccgr.org](mailto:info@mccgr.org)

## COMMUNITY LIFE

Anthony Vander Schaaf • [anthony@mccgr.org](mailto:anthony@mccgr.org)